

**Barbary Coast Bull Terrier Club  
Sacramento Kennel Club  
Judge: Russell Lamonby  
April 14, 2012**



After the initial downpour of rain and hail on my arrival, just make me feel at home; out came the Californian sunshine in time for the show. The entry was modest in number but high in quality, especially amongst the top placed exhibits. Thanks to everyone for showing their Bull Terriers under me and to the club members who spent their time after the show to make my trip both enjoyable and memorable.

**WHITE**

**12 – 18 Months Dogs**

1<sup>st</sup> - Utt's ARDRY N BULLARDS SMOKE'N (CH Ardry Desert Heat ex Bullards Patrisha Amelia) Tall, upstanding with clean bodylines, adequate head with correct mouth and keen expression; could perhaps use more fill. Showed and handled well. **Reserve Winners Dog**

2<sup>nd</sup> - Ortiz's BESTUVALL RIESLING MOON (CH Crestmonts Savoir Faire ex CH Bestuvall Copy Writer) Different type to 1, being closer to the ground. Has a strong head, could use more profile, mouth level. Average shoulders, needs more upper arm which shows on the move.

**Bred by Exhibitor Dog**

1<sup>st</sup> - May's BULLSEYE OLIVER ORION (CH Cool Conquistador at Crossgarley ex CH Brigadoon La Belle Grande Dame) Decent head, could use more power, with perfect mouth. Nice reach of neck, average shoulder being a little short in upper arm, good feet. Moderate length of back. Good bone and substance.

**Open Dog**

1<sup>st</sup> - Morden's IZIMBALI DEVILS THORN (Emred Huntsman ex Topfuel Devils Paintbrush) Powerful, strong head with length and enough profile, mouth level. Lovely length of neck into well-laid shoulder, good forechest, front and feet. Could be a touch shorter in back, nice spring of rib, shapely quarters, moved, handled and showed well. Unfortunate to meet #7, who is shorter in back and carries's more substance, but a close decision. **Winners Dog and Best of Winners**

**Puppy Bitches**

1<sup>st</sup> - #18. Aron & Foote's DESLYNN'S LINEN AND LACE (CH Bedlam's Kid Nat'ral of Deslynn ex Deslynn's Libby on the Label Donnybrook) Terrier type with a punishing expression, good head with turn, could use more power, but still very young. Correct shoulders, good front and feet. Short back and shapely rear quarters. Moved well in front, but lacks drive in rear, which may improve with age. Up on her toes the whole time; making the most of what she has, which is type in abundance. **Winners Bitch and Best of Opposite Sex**

2<sup>nd</sup> - Morden's JUMP'N'JIVE at BULLISTIC THE JOKER (Megaville Visions ex Seventh Heaven the Joker) Typy, with a good strong head, filled and turned, with correct mouth. Adequate lay of shoulder and front, a touch longcast. Well-angulated rear quarters, but moves a little close going away.

**Bred by Exhibitor Bitches**

1<sup>st</sup> - Harlamoff and Waynee's SOQUEL MILLENIUM SEAGLASS (CH Rhydaman Frosty ex CH Soquel Millenium Black Fern) Very good head with correct mouth and keen expression. Decent shoulders, good front, short back. Well balanced throughout. **Reserve Winners Bitch**

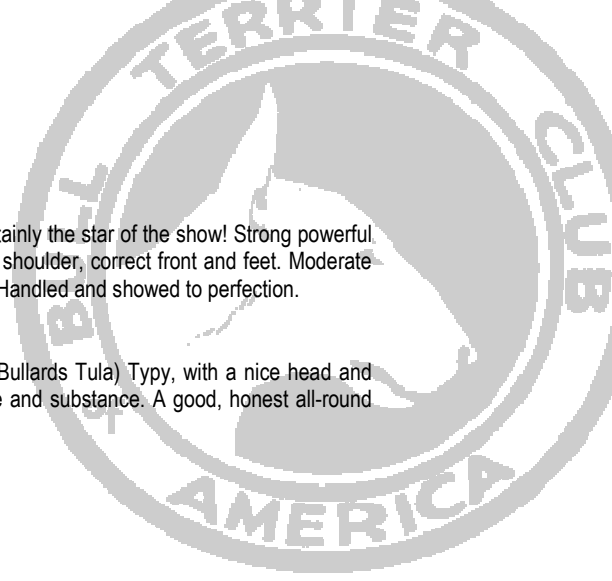
2<sup>nd</sup> - Robertson and Lowden's WALKIN TALL ABSOLUTELY FABULOUS (CH Dajan Top Act with Action ex CH Brigadoon Fire Bird) Enough head, mouth okay, a little dull in expression. Long neck into good shoulders, average front, down on pasterns and could use more bone. Longcast, shapely quarters, moved better going than coming toward.

**American Bred Bitch**

1<sup>st</sup> - Stephan's BRICKHOUSE PRIDE AND PREJUDICE (CH Old Forge Modern Dash Riprock ex CH Edelwin's Brickhouse Bombshell) Upstanding, with an average head piece, level mouth, keen expression. Good reach of neck and lay of shoulders, could use a touch more bone and power throughout. Moved okay.

**Open Bitch**

1<sup>st</sup> - Milteer & Ebey's STONEWALLS QUEEN BOUDICA (CH Moxie's Rockabilly Quicksilver ex CH Action Ba Sw Red Light Roxanne) Classic, feminine head, filled and turned, mouth off to a reverse scissors. Strong neck, decent shoulder and front. Slightly long-cast, well-angulated rear quarters, moved well.



### Best of Variety

Harris' GCH CH ALLEGRO ROCKSTAR (CH Allegro Red Bull ex CH Allegro Sticky Fingers) Certainly the star of the show! Strong powerful head, punishing expression, deep underjaw and correct mouth. Nice reach of neck into well-laid shoulder, correct front and feet. Moderate length of back, good spring of rib, well-angulated rear quarters which he used to move with drive. Handled and showed to perfection.

### Select Bitch

Wong and Gotham's CH BULLARDS NOLA SUNSHINE (CH Moxie's Rockabilly Quicksilver ex Bullards Tula) Typy, with a nice head and okay mouth, would like a more alert expression. Has good bodylines, along with adequate bone and substance. A good, honest all-round bitch.

### COLORED

#### Open Dogs

1<sup>st</sup> - Dykema and Berez' SARAJENI EASY RIDER (Rodeo Rider the Joker ex Sarajeni Calamity Jane) Substantial brindle, strong head with correct mouth; good eye and ear placement, making for correct expression. Powerful, arched neck, good shoulder and front with nice round bone. Moderate length in back, moved and handled well. **Winners Dog and Best of Winners**

2<sup>nd</sup> - Tesconi's BESTUVALL ZINFANDEL MOON (CH Crestmonts Savoir Faire ex CH Bestuvall Copy Writer) Tall, upstanding, dark brindle with a good masculine head, keen eye, unfortunately his mouth is undershot. Correct shoulder and straight front with decent feet. Movement coming is good, but his rear movement lacks drive. **Reserve Winners Dog**

3<sup>rd</sup> - Olage, Robertson and Lowden's WALKIN TALL TRIUMPH O'BRIGADOON (CH Seawind Citadel O'Brigadoon ex CH Brigadoon Fire Bird) Red, with a strong head that could use more profile and finish. Average shoulder, good front, plenty of bone & substance throughout. Showed and handled well.

#### Puppy Bitch

1<sup>st</sup> - Dykema's BESTUVALL HOT CROSS ONE (CH Stellar's Southern Cross ex GCH CH Bestuall Too Hot to Stop) Typy brindle, nice feminine head with length and turn, correct mouth, keen eye and expression. Decent shoulders, needs more length in foreleg, decent feet. Moderate length in back, good bone and substance, well-angulated rear quarters, which she used to move with drive. **Reserve Winners Bitch**

#### Novice Bitch

1<sup>st</sup> - Pierini's BESTUVALL LOVE IS EASY IN PARIS (Sarajeni Easy Rider ex Bestuvall Song of Love) Brindle with a nice feminine head which could perhaps use more power; correct mouth. Lengthy neck into correct shoulder, front and feet. Slightly longcast and could use more drive in rear movement. Showed & handled well.

#### Bred by Exhibitor Bitches

1<sup>st</sup> - Alexander and Salvador's BRIGADOON BANANARAMA O'HANA (CH Kilacabar Cuchulainn ex CH Brigadoon Arriere Ban 'n Walkin Tall) Silver brindle with a strong, blocky head, which could use more quality; correct mouth. Strong neck into decent shoulders. Very good bone & substance, moves well with drive & purpose, shows & handled well. **Winners Bitch**

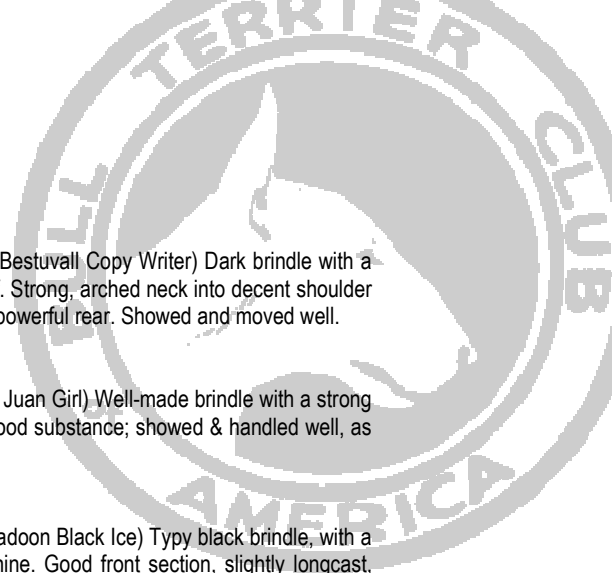
2<sup>nd</sup> - Taylor's BULLISTIC SUGAR AND SPICE (CH Rhydaman Frosty ex Bullistic Diamond Kate) Tricolor who wasn't enjoying her day, something seemed to have spooked her. Nice feminine head; mouth has a tight canine. Has nice shoulders and bodylines, however it was difficult to assess her truly.

#### Open Bitch

1<sup>st</sup> - Calden and Ruppel's QUICKSILVER'S WICKED MOXIE OF BULLARD (CH Moxie's Rockabilly Quicksilver ex Bullards Tula) Black brindle, nice feminine headpiece, but needs more power; mouth just off. Decent shoulder & front, has enough bone for type. Slightly long cast. Moved ok and handled to a high standard.

### Best of Variety

Harlamoff and Wayne's CH SOQUEL MILLENIUM SEAFARER (CH Rhydaman Frosty ex CH Soquel Millenium Black Fern) Well-balanced brindle, excellent head, deep muzzle, filled, with gentle profile and correct mouth. Lovely length of neck into well-laid shoulder, good forechest, straight front and tidy feet. Short back, good quarters, moved with purpose and showed well. A top drawer dog who should just get better and better with age and maturity.



**Best of Opposite Sex**

Cooley and Dykema's CH BESTUVALL BARBERA MOON (CH Crestmonts Savoir Faire ex CH Bestuvall Copy Writer) Dark brindle with a good, well-turned head, could perhaps have a touch more power, keen expression; mouth just off. Strong, arched neck into decent shoulder placement, good front and tidy feet. Nice spring of rib and deep brisket. Adequate length of back, powerful rear. Showed and moved well.

**Select Dog**

Clasen and Ruppel's QUICKSILVER I LIKE IKE (CH Bestuvall Sho' Is Hot ex CH Quicksilver San Juan Girl) Well-made brindle with a strong head that could use more finish; mouth ok, just 1 canine a little tight. Good make & shape with good substance; showed & handled well, as would be expected from this kennel.

**Select Bitch**

Boley's CH TWYLITE BUTTERFLY O'BRIGADOON (CH Kilacabar Stand and Deliver ex CH Brigadoon Black Ice) Typy black brindle, with a good strong head, eye a little kind which spoils her expression; mouth has one instanding canine. Good front section, slightly longcast, moves well both ways.